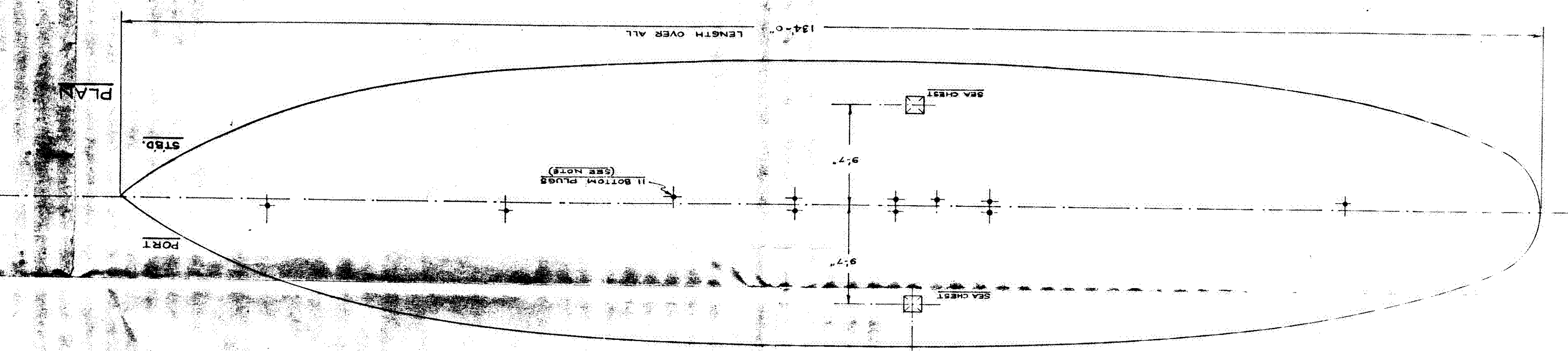
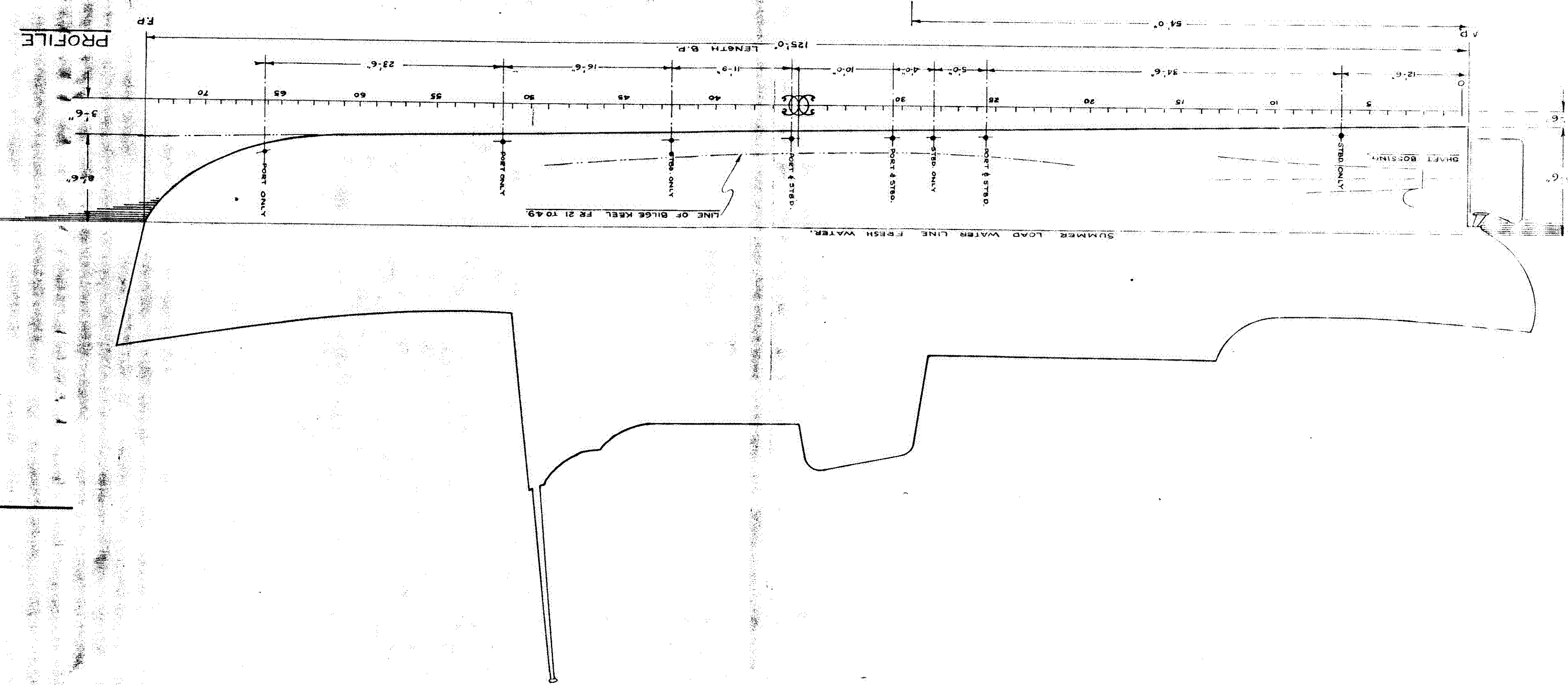


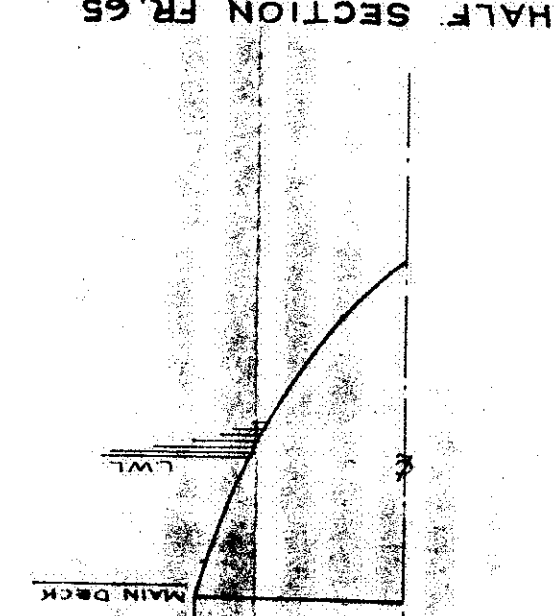
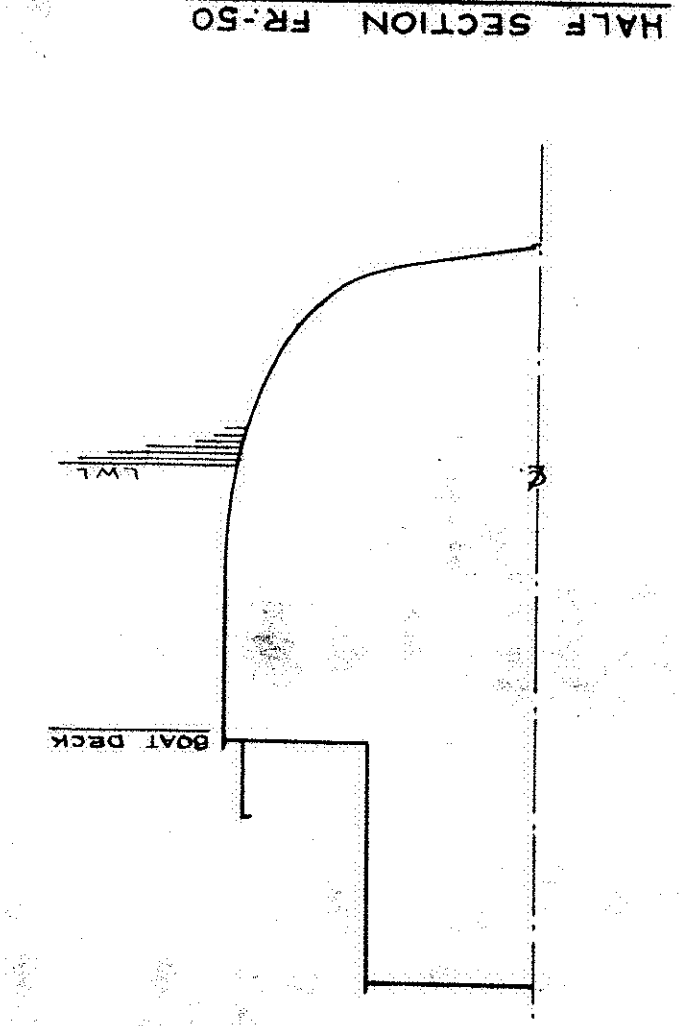
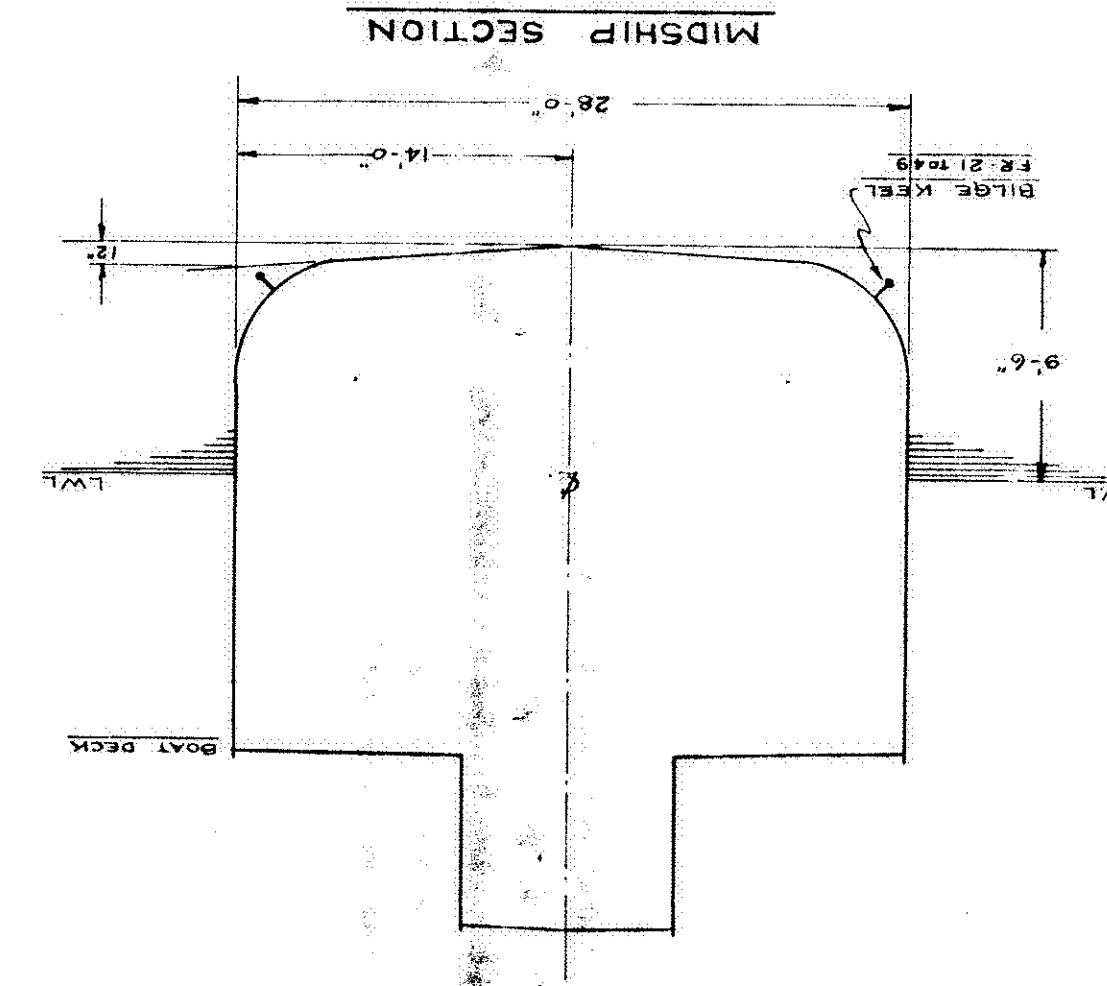
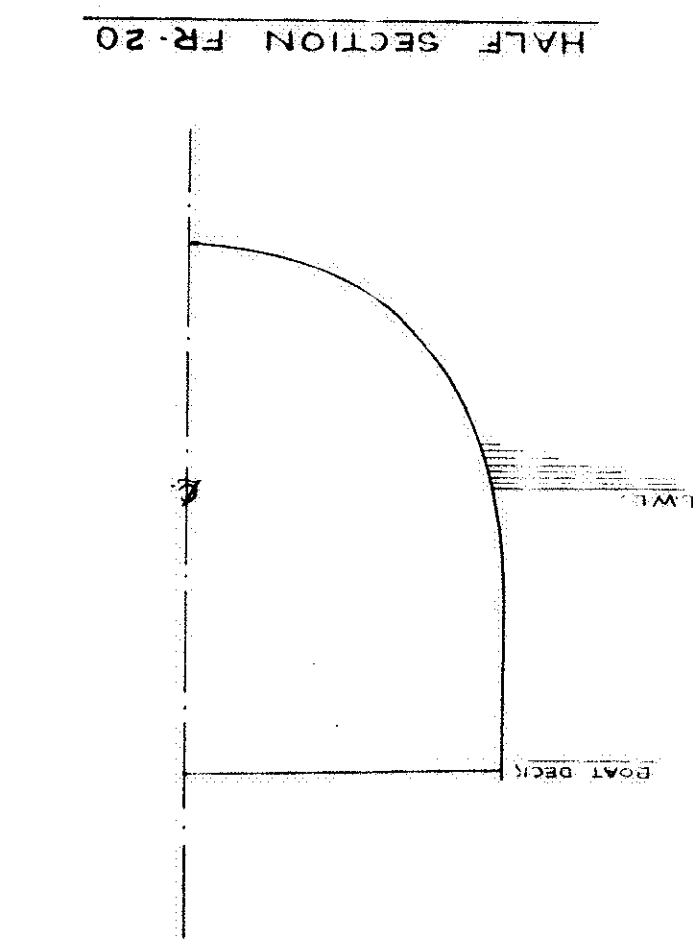
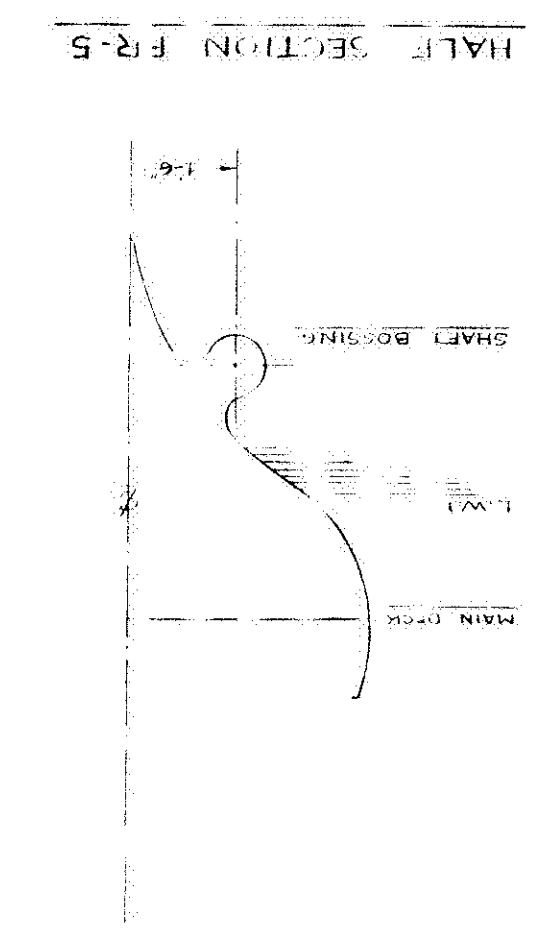
DOCKING PLAN
for
C.G.S. VILLE-MARIE
(SCALE - 1" = 1'-0")

VESSEL PARTICULARS

LENGTH O.A.	134'-0"
LENGTH B.P.	115'-0"
BREADTH MOULDED	28'-0"
DEPTH MOULDED	13'-9"
DRAFT MEAN	9'-0"
KEEL DROOP B.P.	2'-0"
NOTE ~ KEEP SAG AFTER LAUNCHING	
FR-18	3'-25"
MIDSHIPS	2'-8"
FR-53	7'-0"



NOTE ~ BOTTOM PLUGS AS SHOWN ARE ALL 1 1/2" PIPE SIZE BRONZE PLUGS.



Russell-Hipwell
ENGINES LIMITED
OWEN SOUND

DRAWING No. H-132